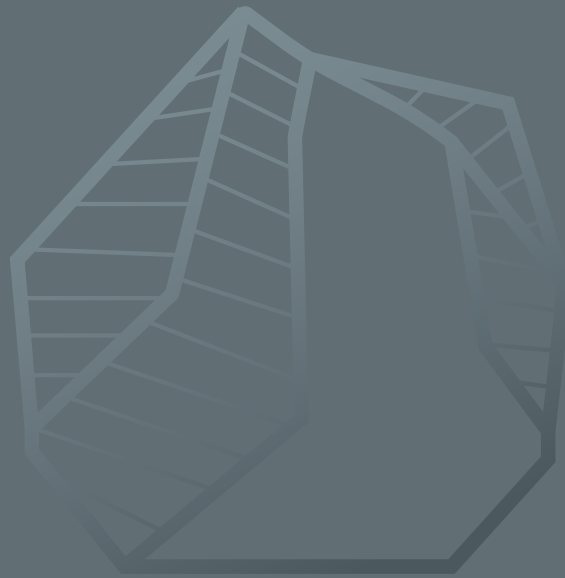




LAMINAR
Vitrified Tiles



CENTO
FULLBODY COLLECTION

100% FULLBODY VITRIFIED TILES
600x600mm | 600x1200mm | 400x400mm | 300x1200mm

INDESTRUCTIBLE

HEAVY DUTY TILES NEVER LOOKED SO GOOD

Inspired by the permanence of nature,
Laminar's fullbody tiles are Indestructible.



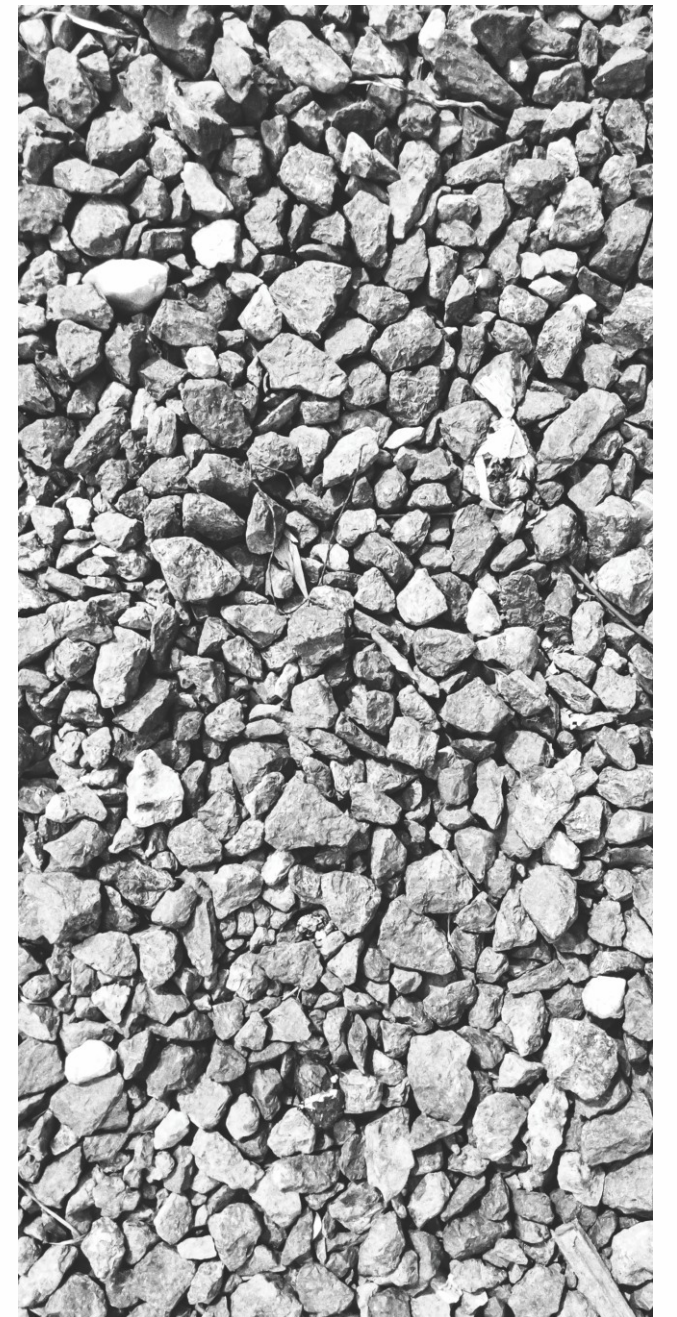
Fullbody Tiles, also known as Technical Ceramics, is the future of tiles. It is widely used in areas of heavy foot traffic, parking, staircases, counter tops, and generally, as a replacement for natural stones.

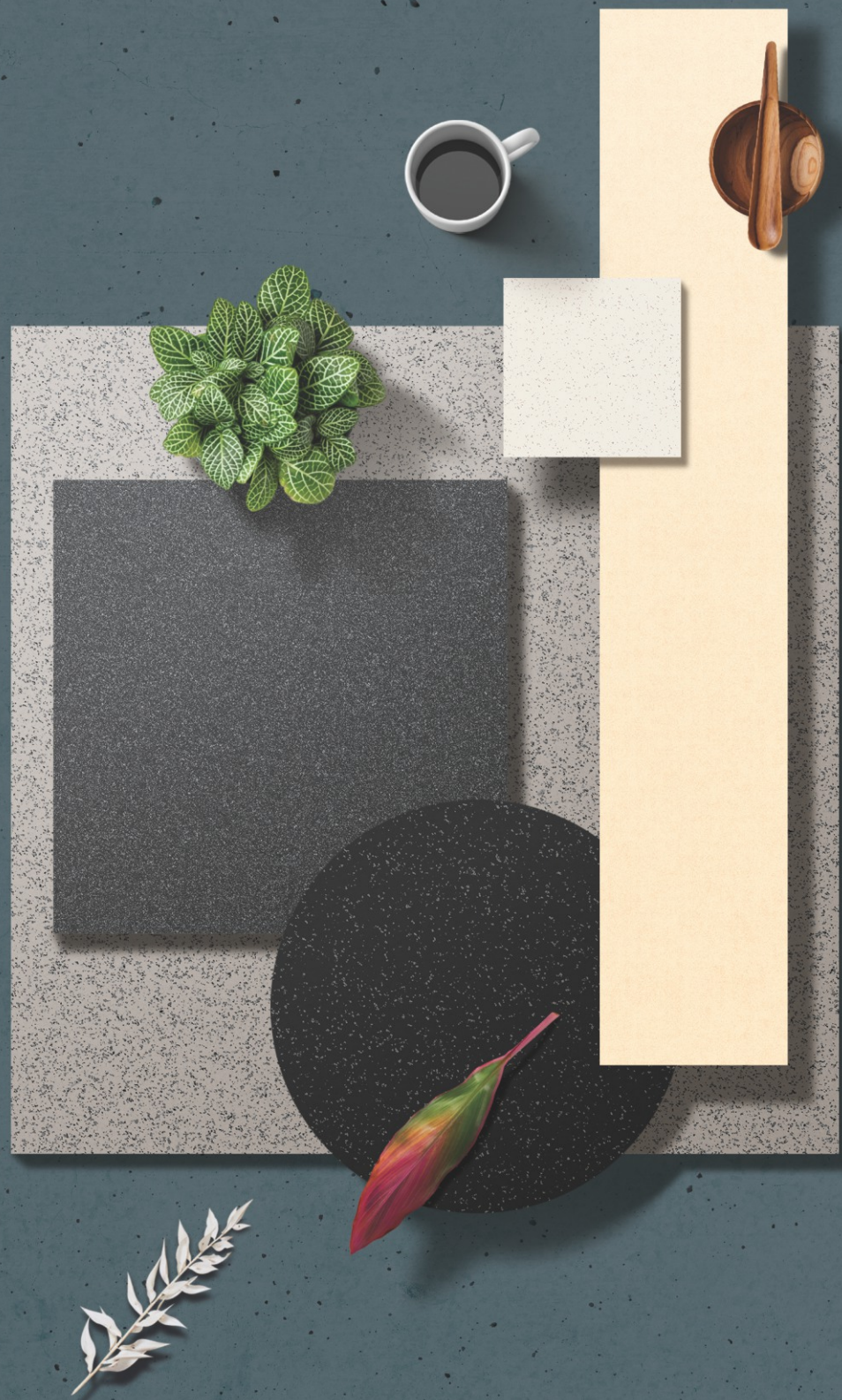
These tiles are made using washed feldspar, quartz, talc, silica and clay for greater purity. After these ingredients are milled into a slurry, color is added.

The slurry is sprayed into a dry powder and stored in dedicated silos to prevent contamination. Then, dry powders of multiple colors are mixed in pre-defined ratios and pressed to achieve the signature salt & pepper look.

Coated with only a top layer, fullbody tiles are then fed into the kiln and fired at 1200°C, ensuring exceptional strength and unmatched durability.

The homogenous nature of fullbody tiles allows it to withstand any amount of wear & tear without fading. Chipping, a concern for regular tiles, becomes a non-factor in fullbody tiles. Fullbody tiles can be moulded or even repolished to make it truly evergreen and versatile.





#LAMINAR
Vitrified Tiles

INTRODUCING
THE **CENTO FULLBODY** COLLECTION

2

SURFACES

MATT
TEXTURED MATT

4

SIZES

600x600mm | 600x1200mm
400x400mm | 300x1200mm

3

THICKNESSES

8.5mm
12mm
15mm

RANGE OF POSSIBLE APPLICATIONS



Residential



Commercial Building



Hospital



Airport



Parking



Hotel, Café & Restaurant



Industries



School & College



Staircase

FEATURES



Wear & Tear Proof



Scratch Resistant



Easy to Clean



Impact Resistant

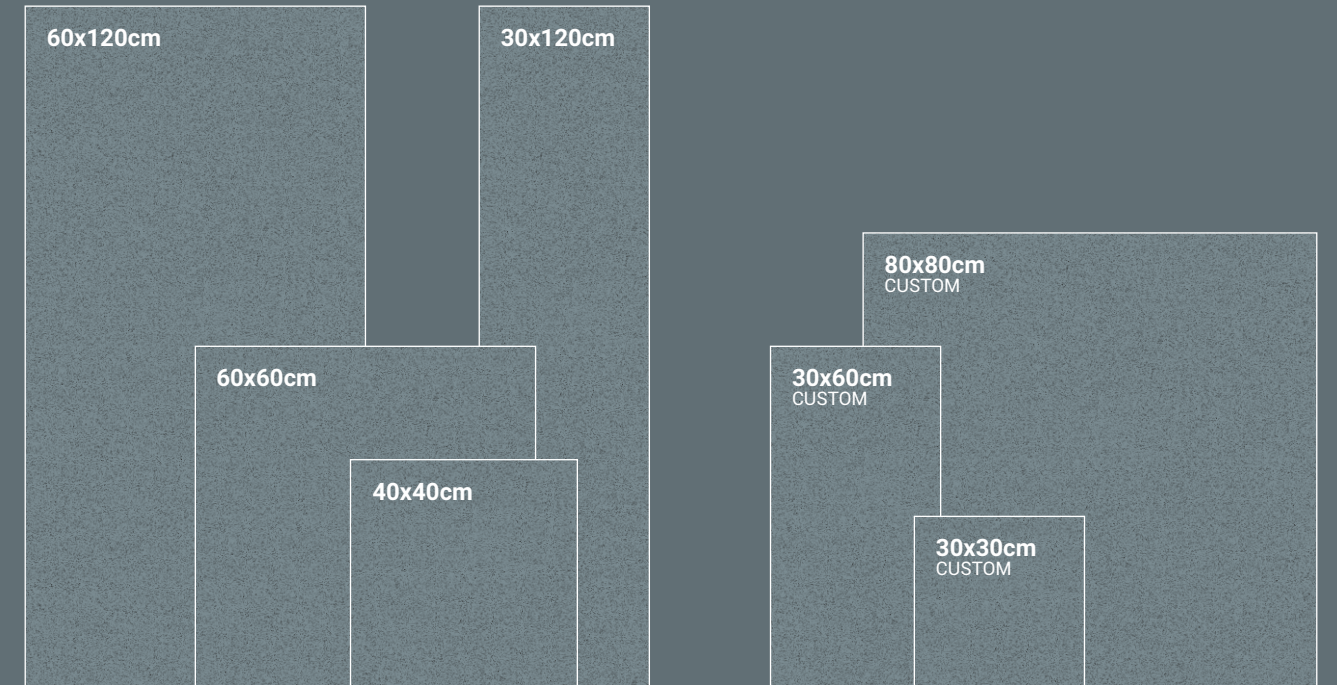


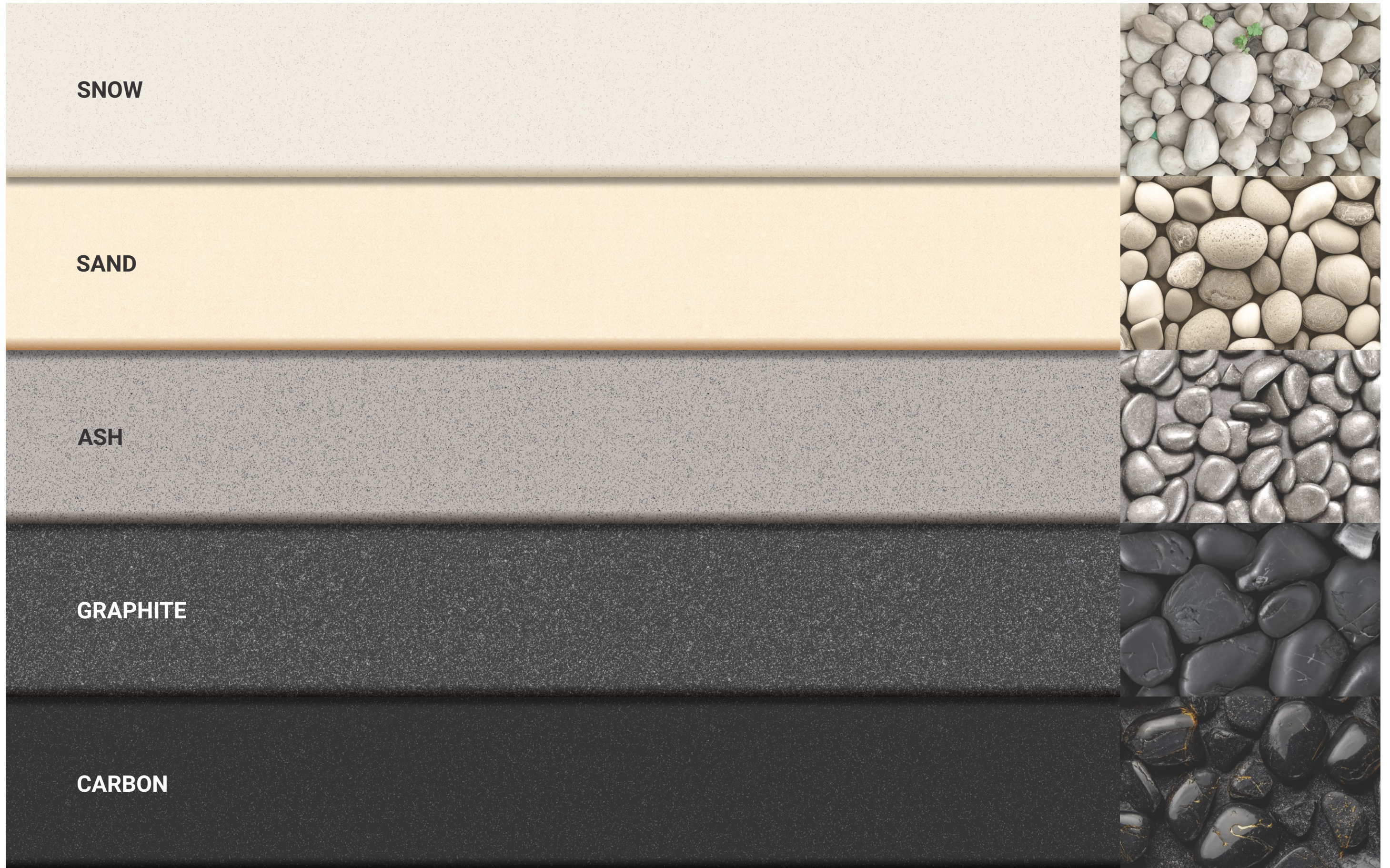
Stain Resistant



Anti Skid

AVAILABLE SIZES





CENTO FULLBODY COLLECTION STORY

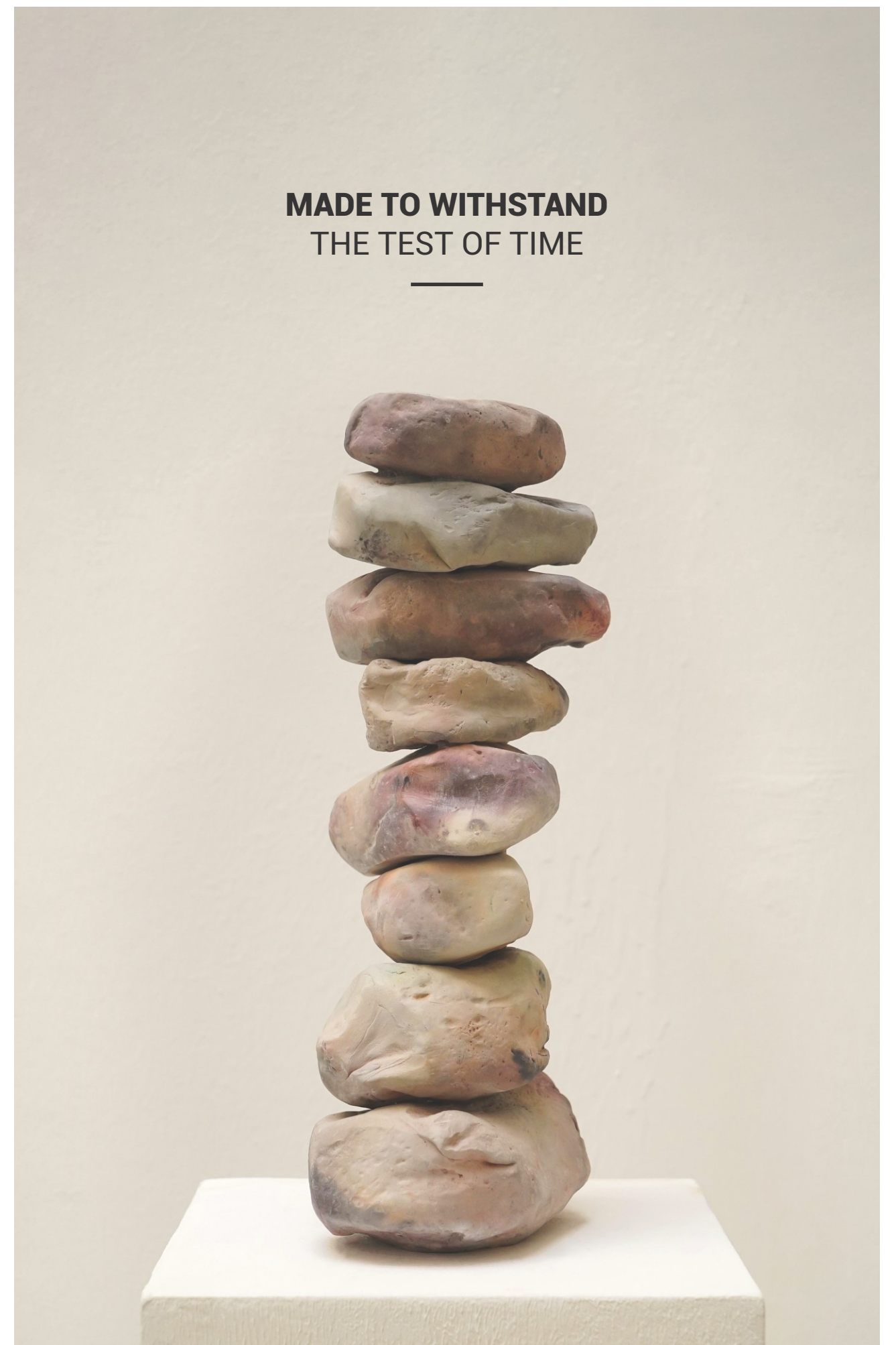
The Cento Collection redefines longevity with fullbody vitrified tiles. Derived from the Italian word for "100," the collection symbolizes perfection, delivering a homogeneous design throughout its structure.

Inspired by nature's enduring elements—Snow, Sand, Ash, Graphite, and Carbon—Cento seamlessly blends the organic elegance of stone with advanced vitrification technology. Crafted with state-of-the-art technology, Cento tiles meet rigorous international standards, offering exceptional durability in both, interior and exterior settings.

Positioned against granite or marble, Cento tiles provide greater ease of maintenance, cost-efficiency, and versatility, while delivering the same luxurious appearance.

Cento's homogenous body can endure chipping, grooving and moulding to elevate spaces while exhibiting extraordinary resistance to wear and tear. Cento delivers unmatched reliability, effortless maintenance, and timeless appeal, exemplifying the art of better living.

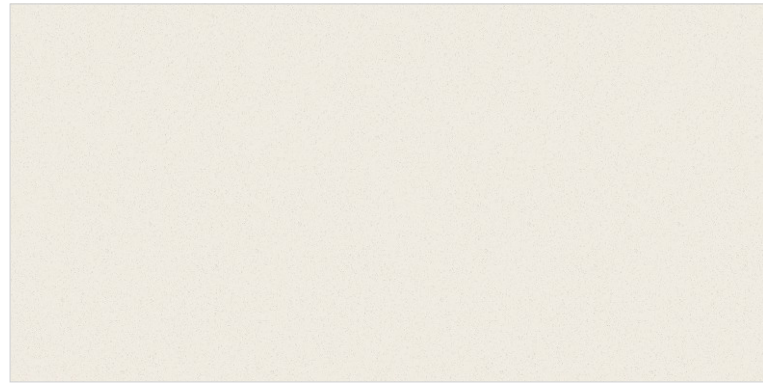
**MADE TO WITHSTAND
THE TEST OF TIME**



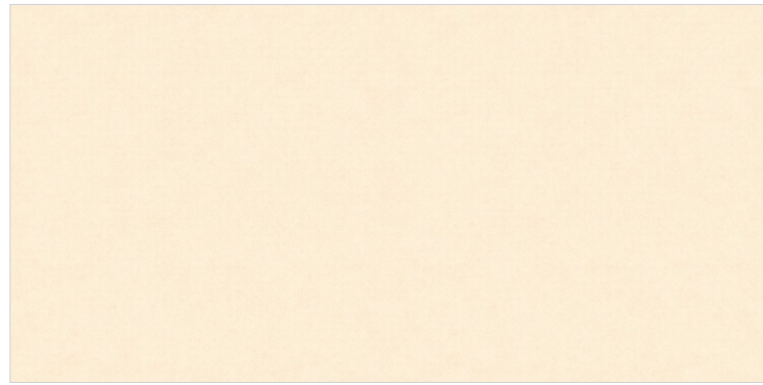
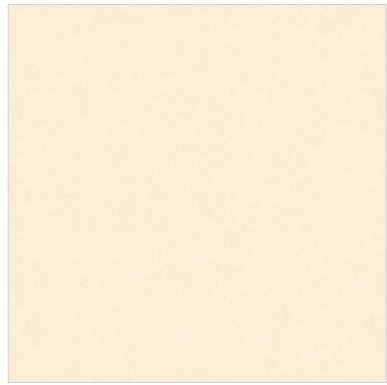
Sizes
600x600mm | 600x1200mm

Body
Fullbody

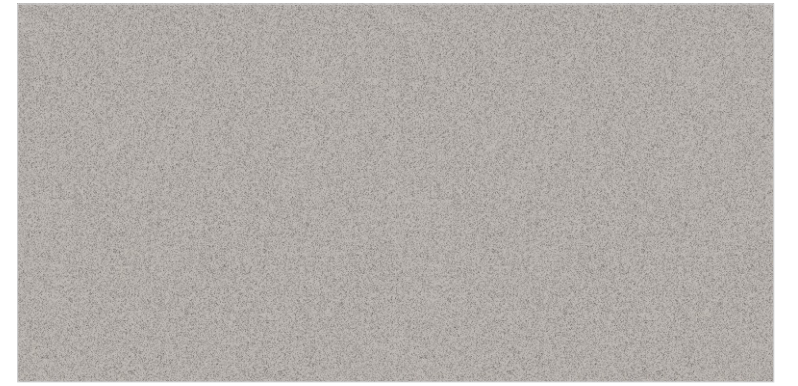
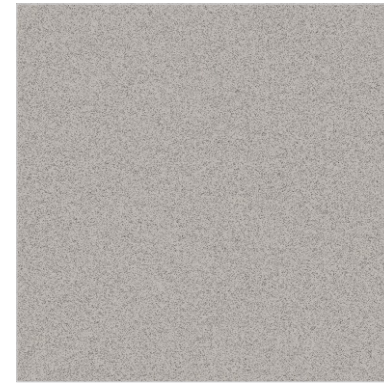
Thickness
8.5mm



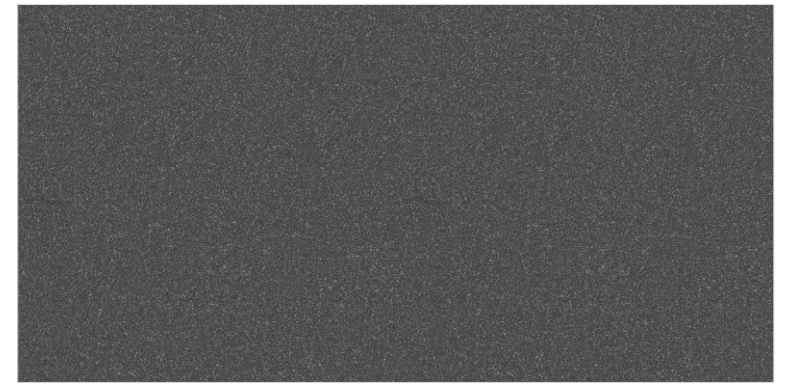
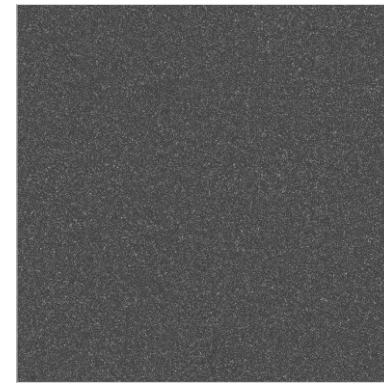
SNOW



SAND



ASH



GRAPHITE



CARBON



#LAMINAR
Vitrified Tiles

Wall: SNOW | 600x1200mm, Floor: SNOW | 600x600mm

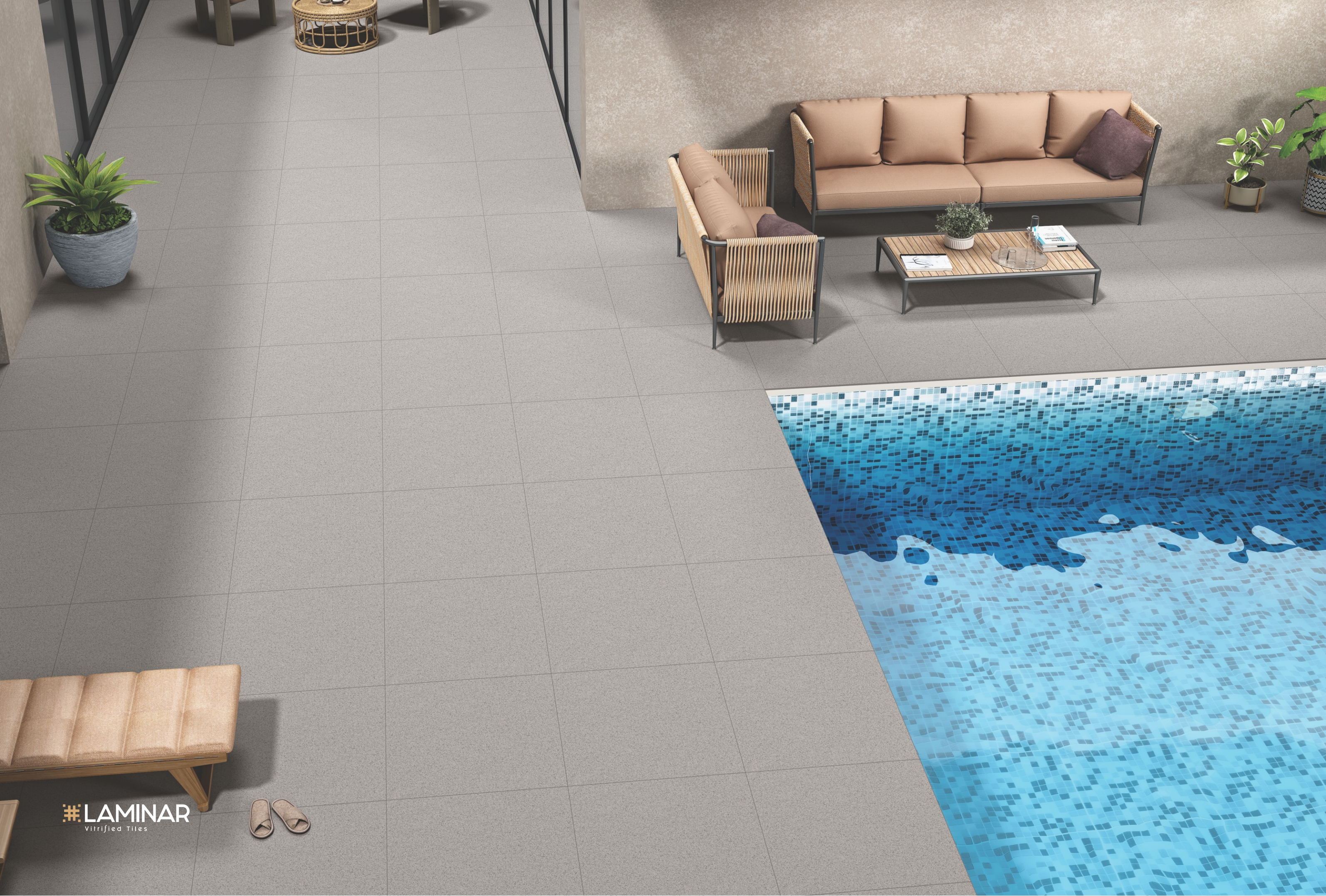
GALAXY COFFEE



THEATER



#LAMINAR
vitrified Tiles



#LAMINAR
Vitrified Tiles



#LAMINAR
Vitrified Tiles



#LAMINAR
Vitrified Tiles

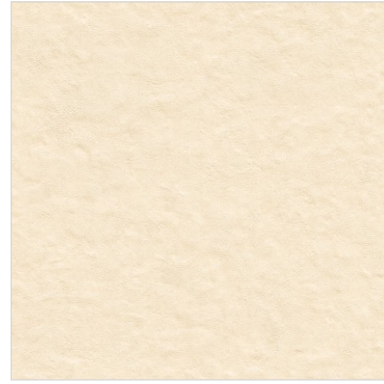
CENTO

FULLBODY COLLECTION

Size | Body | Thickness
400x400mm | Fullbody with Textured Punch | 12mm



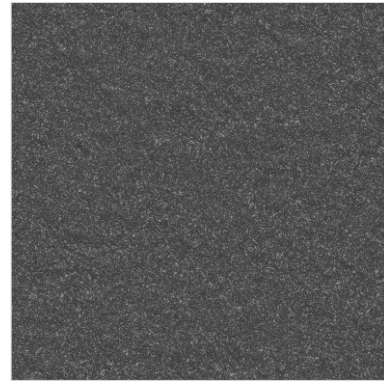
SNOW



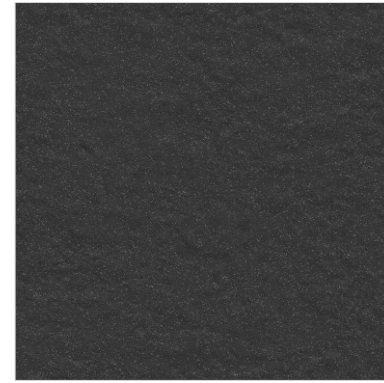
SAND



ASH



GRAPHITE

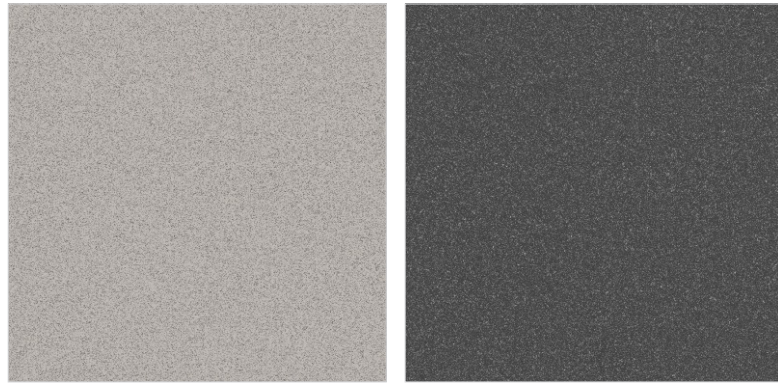


CARBON



CENTO
FULLBODY COLLECTION

Size | Body | Thickness
600x600mm | Fullbody with Textured Punch | 15mm



ASH

GRAPHITE



GRAPHITE | 600x600mm

CENTO
FULLBODY COLLECTION



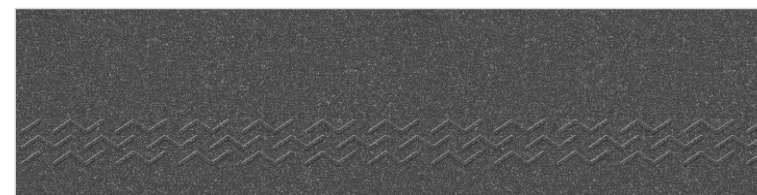
Size | Body | Thicknesses | Pre-Moulded with Punch
300x1200mm | Fullbody | 12mm, 15mm



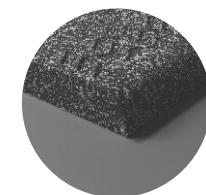
ASH



Pre-Moulded Profile



GRAPHITE



Pre-Moulded Profile



DESIGN: **ASH (RISER) & ASH (STEPS)**



DESIGN: **GRAPHITE & ASH (RISER) & GRAPHITE & ASH (STEPS)**

TECHNICAL SPECIFICATIONS

FULLBODY - MATT

CHARACTERISTICS	UNITS	STANDARD AS PER ISO 13006:2018/ EN14411 Gr.Bla	STANDARD AS PER IS 15622:2017 Gr.Bla	MEAN VALUE OF LAMINAR	TESTING METHODS
REGULATORY PROPERTIES					
Deviation in Length and Width	mm	± 0.30%	± 0.10%	± 0.10%	ISO-10545-2/IS13630-1
Deviation in Thickness	mm	± 5.0%	± 5.0%	± 4.0%	ISO-10545-2/IS13630-1
Straightness in Side	mm	± 0.30%	± 0.10%	± 0.10%	ISO-10545-2/IS13630-1
Rectangularity	mm	± 0.30%	± 0.10%	± 0.10%	ISO-10545-2/IS13630-1
Surface Flatness Central Curvature	mm	± 0.40%	± 0.50%	± 0.20%	ISO-10545-2/IS13630-1
Surface Flatness Edge Curvature	mm	± 0.40%	± 0.50%	± 0.20%	ISO-10545-2/IS13630-1
Surface Flatness Edge Warpage	mm	± 0.40%	± 0.50%	± 0.10%	ISO-10545-2/IS13630-1
Surface Quality	-	95% defect free	95% defect free	95% defect free	ISO-10545-2/IS13630-1
Glossiness - Matt	-	As per Manufacturer	As per Manufacturer	4 ≤ Glossy Value ≤ 7	GLOSS METER 60°
STRUCTURAL PROPERTIES					
Water Absorption	%	Ev ≤ 0.5%	Ev ≤ 0.08%	Ev ≤ 0.08%	ISO-10545-3/IS13630-2
Bulk Density	Gm/Cc	As per Manufacturer	2.2	> 2.25	ISO-10545-3/IS13630-2
MECHANICAL PROPERTIES					
Modulus of Rupture - 8.5mm	N/mm ²	Min 35.0 N/mm ²	Min 35.0 N/mm ²	Min 39.0 N/mm ²	ISO-10545-4/IS13630-6
Modulus of Rupture - 12mm	N/mm ²	Min 35.0 N/mm ²	Min 35.0 N/mm ²	Min 42.0 N/mm ²	
Modulus of Rupture - 15mm	N/mm ²	Min 35.0 N/mm ²	Min 35.0 N/mm ²	Min 44.0 N/mm ²	
Breaking Strength - 8.5mm	N	Min 1300.0 N	Min 1300.0 N	Min 1800.0 N	ISO-10545-4/IS13630-6
Breaking Strength - 12mm	N	Min 1300.0 N	Min 1300.0 N	Min 3800.0 N	
Breaking Strength - 15mm	N	Min 1300.0 N	Min 1300.0 N	Min 5000.0 N	
SURFACE MECHANICAL PROPERTIES					
MOH'S Hardness #	-	As per Manufacturer	Min. 5	Min. 5 - Max 7	BS EN 15771/IS 13630-13
Surface Abrasion Resistance	Class	175mm ³	140 mm ³	130 mm ³	ISO-10545-6/IS 13630-12
THERMAL HYDROMETRIC PROPERTIES					
Moisture Expansion	mm/m	Max 0.06% (0.6mm/m)	Max 0.02mm/m	Max 0.02mm/m	ISO-10545-10/IS13630-3
Thermal Expansion (COE) at 100°C	x10 ⁻⁶	As per Manufacturer	Max 6x10 ⁻⁶	Max 6x10 ⁻⁶	ISO-10545-8/IS13630-4
Thermal Shock Resistance	Cycles	Min 10 Cycles	Min 10 Cycles	Min 10 Cycles	ISO-10545-9/IS13630-5
Impact Resistance (COR) #	-	Min 0.55	Min 0.55	Min 0.6	ISO-10545-5/IS13630-14
Frost Resistance	-	As per Manufacturer	As per Manufacturer	Frost Resistance	ISO-10545-12/IS13630-10
CHEMICAL PROPERTIES					
Resistance of staining Unglazed	Class	As per Manufacturer	Min Class 2	Min Class - 4 / Min Class - 2	ISO-10545-14/IS13630-8
Resistance house hold chemical & swimming pool salts Unglazed	Class	Min Class UB	As per Manufacturer	Min Class UA / Min Class A	ISO-10545-13/IS13630-7
Resistance to low concentration acids and alkali acids Unglazed	Class	As per Manufacturer	As per Manufacturer	Min Class ULB* / Min Class A*	ISO-10545-13/IS13630-7
Resistance to high concentrate acids and alkalis acids Unglazed	Class	As per Manufacturer	As per Manufacturer	Min Class UHB* / Min Class A*	ISO-10545-13/IS13630-7
SAFETY PROPERTIES					
Skid Resistance - (DCOF - WET Pendulum)#	-	As per Manufacturer	As per Manufacturer	> 0.4	ISO 10545-17

* Excepts Hydrofluoric Acid and Its Compounds.
For Floor Tiles: As per Customer Requirements.



PACKING DETAILS

Sizes	Thicknesses	Pcs / Box	Coverage Area
600x1200mm	8.5mm	2 pcs	1.44 Square meter
600x600mm	8.5mm	4 pcs	1.44 Square meter
600x600mm	15mm	2 pcs	0.72 Square meter
400x400mm	12mm	5 pcs	0.80 Square meter
300x1200mm	12mm	3 pcs	1.08 Square meter
300x1200mm	15mm	3 pcs	1.08 Square meter



Corporate Office:

Lumbini Ceramics Limited
4th Floor, Lal Durbar One, Narayanhiti Path,
Durbar Marg, Kathmandu, Nepal.
Google Plus Code: P87C+99 Kathmandu

Laminar Experience Centre:

1st Floor, Uttar Dhoka Road, Kathmandu, Nepal.
Google Plus Code: P89F+2MQ Kathmandu

Factory & Laminar Exhibition Centre:

Gulariya Nagarpalika-8, Bardiya, Nepal.
Google Plus Code: 59Q3+9VF Bardia

Customer Care No: +977 98023 64639
info@laminartiles.com
www.laminartiles.com

Follow us: A row of five small, white social media icons: LinkedIn, Instagram, Facebook, Twitter, and Pinterest.