



 **LAMINAR**
Vitrified Tiles



Stondeck
COLLECTION

GRIP9

100% GLAZED VITRIFIED TILES

400x400mm



HIGHGRIP | SAFE | DURABLE

Stondeck

Collection Story

The StonDeck collection is developed to withstand high-traffic and harsh weather providing a high-grip, long-lasting solution for outdoor areas.

Derived from "stone" and "deck," Stondeck embodies robust natural stones and the elegant, functional surfaces they create. The durable 10mm thickness and unique textured punch designs combined with Laminar's proprietary Grip9 High Grip Technology makes StonDeck safe and reliable even in the most challenging outdoor environments.







The Collection is crafted for parking areas, shower area, terrace and balcony, wet surfaces and any space that requires durable, anti-skid surfaces. The Grip9 surface with an Anti-Skid Value of R9 or above is specially designed to support two-wheeler parking in the context of Nepal.

Stondeck features five distinct punches and offers a range of textures and patterns that can personalize your outdoor spaces. Whether your aesthetic is modern or rustic, the Stondeck Collection offers the perfect balance of style and substance for your space.

www.laminartiles.com



Application Areas

-  Parking
-  Terrace Balconies
-  Washroom Floor
-  Courtyard
-  Walk-Ways
-  Garden

Features

-  High-Grip
-  Water Resistant
-  Scratch Resistance
-  Minimal Maintenance
-  Easy to Clean
-  Natural Texture

LAMINAR
Vitrified Tiles

INTRODUCING THE **STONDECK** COLLECTION

1

SIZE
400x400mm
THICKNESS
10MM

1

SURFACE
GRIP9

5

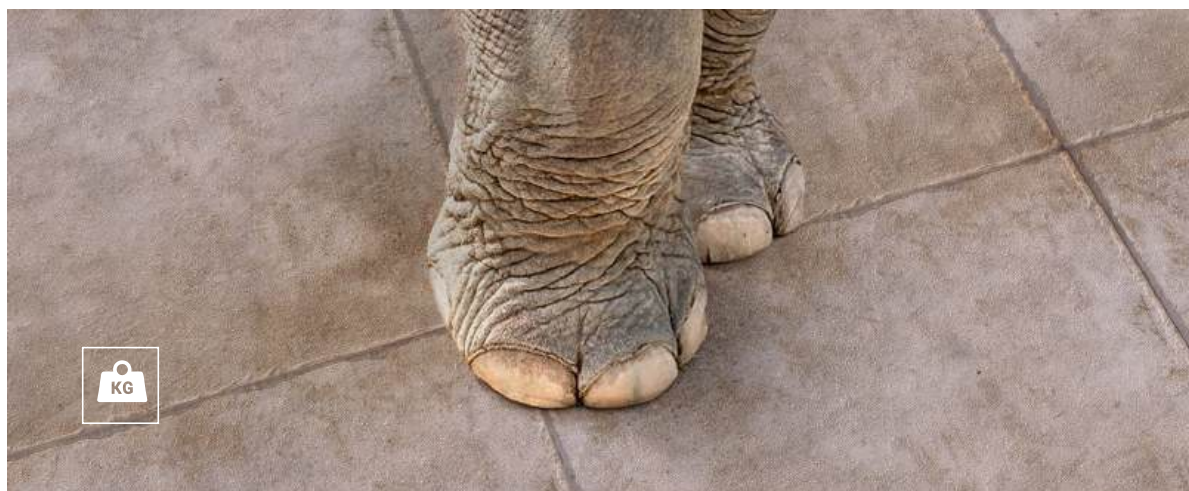
TEXTURED
PUNCHES

51

UNIQUE
DESIGNS



HIGH-GRIP SURFACE FOR SAFETY



EXCEPTIONAL DURABILITY



SUPER EASY TO CLEAN & MAINTAIN

GRIP9 Surface by Laminar

Extra Grip for Wet & Outdoors

Grip9 is a propriety technology developed by Laminar Tiles that creates a High-Grip, Extra-Durable surface designed to meet the harsh demands imposed by the great outdoors. The surface is created to provide additional grip, even in wet conditions, substantially increasing safety and stability of vehicles driving on it, particularly two-wheelers.

The Grip9 Surface is crafted by adding corundum powder, custom fine grits and specialized frits to obtain a surface that has an anti-skid value of R9 or above. These additions form hard, micro-granules, that are embedded on the tile's surface creating friction and grip. The Grip9 surface is natural looking and hard, creating a safe walking & driving experience.



ANTI-SKID SURFACE
WITH R9 RESISTANCE



EXCEPTIONAL
DURABILITY



SUPER EASY
TO CLEAN



HIGH SCRATCH
RESISTANCE



EASY TO
MAINTAIN



NATURAL
LOOK & FEEL



Stondeck

COLLECTION

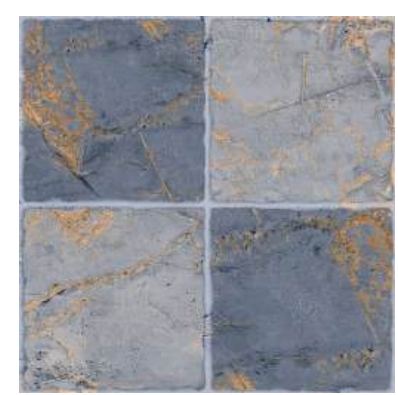
Size
400x400mm

Surface
GRIP9

Thickness
÷ 10mm



BLUE GALAXY



BLUE GEM



BROWN SPACE



DESERT STORM



GREY SPACE



IRON RUST



NERO STONE



RED GOLD

Floor : RED GOLD



Size
400x400mm

Surface
GRIP9

Thickness
÷ 10mm



PEACH SPACE



PEACH SAND



SILVER COIN



STEEL ROCK



TERRA COIN



VERDE SPACE



Foursquare Punch

Floor : TERRA COIN



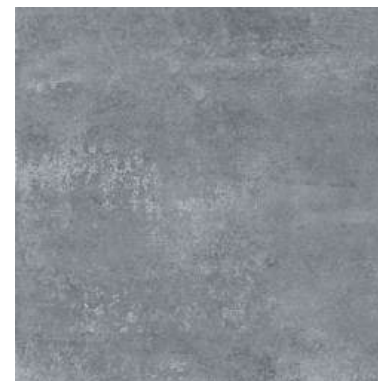
Floor : KAPASA BROWN

Stondeck COLLECTION

Size
400x400mm

Surface
GRIP9

Thickness
÷ 10mm



CONCENT GREY ⌘ RANDOM



HARD ROCK ⌘ RANDOM



KAPASA BROWN ⌘ RANDOM



KAPASA GREY ⌘ RANDOM



RUSTY BEIGE ⌘ RANDOM



RUSTY RED ⌘ RANDOM



SAHARA BEIGE ⌘ RANDOM



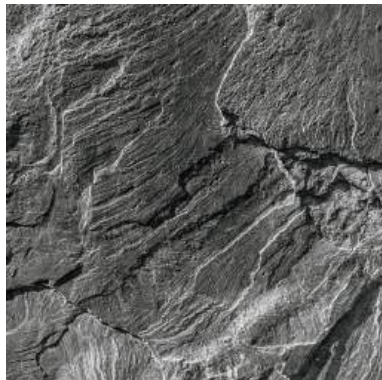
SIERA BROWN ⌘ RANDOM

* ⌘ Random - Tile has multiple variations of the same design

Size
400x400mm

Surface
GRIP9

Thickness
÷ 10mm



BLACK SALT ⚡ RANDOM



BRIGHT STORM ⚡ RANDOM



DEEP PEAK ⚡ RANDOM



EARTH WAY ⚡ RANDOM



ROCKVERY ⚡ RANDOM



SEA ROCK ⚡ RANDOM



VOLCERATO ⚡ RANDOM

* ⚡ Random - Tile has multiple variations of the same design



Floor : EARTH WAY



Floor : DUNA GREY

Stondeck
COLLECTION

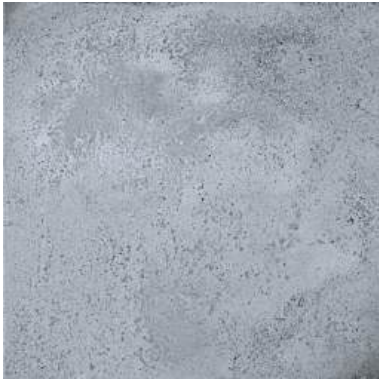
| | | |
|-------------------|-------------------------|---------------------|
| Size 400x400mm | Surface GRIP9 | Thickness ÷ 10mm |
|-------------------|-------------------------|---------------------|



CANVA EARTH ⌘ RANDOM



DUNA BEIGE ⌘ RANDOM



DUNA GREY ⌘ RANDOM



DUNA IVORY ⌘ RANDOM



FREMOROON ⌘ RANDOM



GREDO FLORA ⌘ RANDOM



GREDO INDICA ⌘ RANDOM



GREDO SOIL ⌘ RANDOM

* ⌘ Random - Tile has multiple variations of the same design

Stondeck
COLLECTION

Size
400x400mm

Surface
GRIP9

Thickness
÷ 10mm



GREDO STEEL ⌘ RANDOM



HARD ASH ⌘ RANDOM



HARD SAND ⌘ RANDOM



TERRA BEIGE ⌘ RANDOM



TERRA BROWN ⌘ RANDOM



TERRA GREY ⌘ RANDOM



TERRA PEACH ⌘ RANDOM

* ⌘ Random - Tile has multiple variations of the same design



Stonfrem Punch

Floor : TERRA BROWN & TERRA PEACH



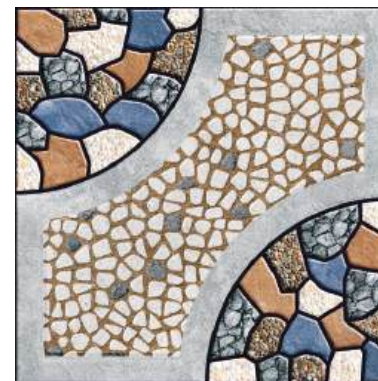
Floor : ARMY GRIS

Stondeck COLLECTION

Size
400x400mm

Surface
GRIP9

Thickness
÷ 10mm



ARMY AZZURRO



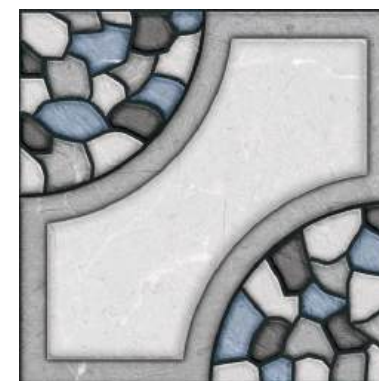
ARMY BROWN



ARMY GOLD



ARMY GRIS



ARMY SILVER



ARMY VINTAGE



ARMY NERO

TECHNICALSPECIFICATIONS

STONDECK - GRIP9 MATT

| CHARACTERISTIC | UNITS | STANDARD AS PER ISO 13006:2018/ EN14411 Gr.Bla | STANDARD AS PER IS 15622:2017 Gr.Bla | MEAN VALUE OF LAMINAR | TESTING METHODS |
|---|------------------|--|--|-----------------------------------|-------------------------|
| REGULATORY PROPERTIES | | | | | |
| Deviation in Length and Width | mm | ± 0.30% (±1.0MM) | ± 0.10% | ± 0.10% | ISO-10545-2/IS13630-1 |
| Deviation in Thickness | mm | ± 5.0% (±0.5MM) | ± 5.0% | ± 5.0% | ISO-10545-2/IS13630-1 |
| Straightness in Side | mm | ± 0.30% (±0.8MM) | ± 0.10% | ± 0.10% | ISO-10545-2/IS13630-1 |
| Rectangularity | mm | ± 0.30% (±1.5MM) | ± 0.10% | ± 0.10% | ISO-10545-2/IS13630-1 |
| Surface Flatness Central Curvature | mm | ± 0.40% (±1.8MM) | ± 0.50% | ± 0.20% | ISO-10545-2/IS13630-1 |
| Surface Flatness Edge Curvature | mm | ± 0.40% (±1.8MM) | ± 0.50% | ± 0.20% | ISO-10545-2/IS13630-1 |
| Surface Flatness Edge Warpage | mm | ± 0.40% (±1.8MM) | ± 0.50% | ± 0.10% | ISO-10545-2/IS13630-1 |
| Surface Quality | - | 95% defects Free | 95% defects Free | 95% defects Free | ISO-10545-2/IS13630-1 |
| Glossiness - Matt | - | As per Manufacturer | As per Manufacturer | 5≤ Glossy Value ≤14 | GLOSS METER 60° |
| STRUCTURAL PROPERTIES | | | | | |
| Water Absorption | % | Ev≤ 0.5% | Ev≤ 0.08% | Ev≤ 0.08% | ISO-10545-3/IS13630-2 |
| Bulk Density | Gm/Cc | 2.2 Min | 2.2 | >2.25/ g/cm³ | ISO-10545-3/IS13630-2 |
| MECHANICAL PROPERTIES | | | | | |
| Modulus of Rupture | N/mm² | Min 35.0 N/mm² | Min 35.0 N/mm² | Min 40.0 N/mm³ | ISO-10545-4/IS13630-6 |
| Breaking Strength ≥ 10mm | N | Min 1300.0 N | Min 1300.0 N | Min 2000.0 N | ISO-10545-4/IS13630-6 |
| SURFACE MECHANICAL PROPERTIES | | | | | |
| MOH’S Hardness # | - | As per Manufacturer | As per Manufacturer | Min. 5 - Max 7 | BS EN 15771/IS 13630-13 |
| Surface Abrasion Resistance | Class | As per Manufacturer | As per Manufacturer | Min Class II - Max Class V | ISO-10545-7/IS 13630-11 |
| THERMAL HYDROMETRIC PROPERTIES | | | | | |
| Moisture Expansion | mm/m | Max 0.06% (0.6mm/m) | Max 0.02mm/m | Max 0.02mm/m | ISO-10545-10/IS13630-3 |
| Thermal expansions (COE) at 100°C | x10 ⁻ | As per Manufacturer | Max 6x10 ⁻⁶ | Max 6x10 ⁻⁶ | ISO-10545-8/IS13630-4 |
| Thermal Shock Resistance | Cycles | Min 10 Cycles | Min 10 Cycles | Min 10 Cycles | ISO-10545-9/IS13630-5 |
| Impact resistance (COR) # | - | Min 0.55 | Min 0.55 | Min 0.6 | ISO-10545-5/IS13630-14 |
| Crazing Resistance | - | As per Manufacturer | 4 - Cycles | 5 - Cycles | ISO-10545-11/IS13630-9 |
| Frost Resistance | - | As per Manufacturer | As per Manufacturer | Frost Resistance | ISO-10545-12/IS13630-10 |
| CHEMICAL PROPERTIES | | | | | |
| Resistance of staining glazed | Class | Min class 3 | Min Class 1 | Min Class - 4 / Min Class - 1 | ISO-10545-14/IS13630-7 |
| Resistance house hold chemical & swimming pool salts glazed | Class | Min Class GB | Min Class AA | Min Class GA / Min Class AA | ISO-10545-13/IS13630-8 |
| Resistance to low concentration Acids and alkali acids | Class | As per Manufacturer | As per Manufacturer | Min Class GLB* / Min Class AA* | ISO-10545-13/IS13630-8 |
| Resistance to high concentrate Acids and alkalis Acids | Class | As per Manufacturer | As per Manufacturer | Min Class GHB*/ Min Class A* | ISO-10545-13/IS13630-8 |
| SAFETY PROPERTIES | | | | | |
| Skid resistance - (DCOF - WET Pendulum)# | - | As per Manufacturer | As per Manufacturer | Min 0.5 / Max 0.6 | ISO 10545-17 |
| Slip Resistance - Matt (DCOF - R Value) | - | As per Manufacturer | As per Manufacturer | R9 | DIN 51130 |

* Excepts Hydrofluoric Acid Its Compounds.
For Floor Tiles , As per Customer Requirements.

PACKING DETAILS

| Size | Thickness | Pcs / Box | Coverage Area |
|-----------|-----------|-----------|-------------------|
| 400x400mm | 10mm | 6 pcs | 0.96 Square meter |





Corporate Office:

Lumbini Ceramics Limited
4th Floor, Lal Durbar One, Narayanhiti Path,
Durbar Marg, Kathmandu, Nepal.
Google Plus Code: P87C+99 Kathmandu

Laminar Experience Centre:
1st Floor, Uttar Dhoka Road, Kathmandu, Nepal.
Google Plus Code: P89F+2MQ Kathmandu

Factory & Laminar Exhibition Centre:
Gulariya Nagarpalika-8, Bardiya, Nepal.
Google Plus Code: 59Q3+9VF Bardia

Customer Care No: +9779802364639

Info@laminartiles.com
www.laminartiles.com

Follow us: [!\[\]\(003082e50e3009141f59bd5df831749f_img.jpg\)](#) [!\[\]\(f439ede8735757e3190eab35e168f1de_img.jpg\)](#) [!\[\]\(f5c165e0bd35116675db6686a30b1fea_img.jpg\)](#) [!\[\]\(8eeb5cc52b4d0f9a4ccc73b2d771855c_img.jpg\)](#) [!\[\]\(d339191bc3bc55555af8e02f21021073_img.jpg\)](#)